

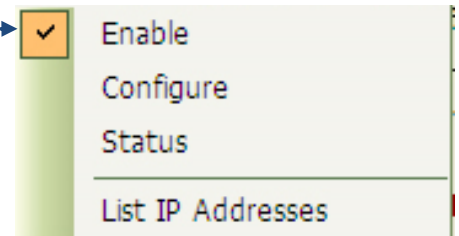
OffiSign-In™

Electronic Sign-In Solutions, LLC

Remote Viewer Manual

The remote viewer is a free download from our website. It allows each computer attached to the network running OSI™ to see who has signed in and at what time.

The OSI™ main menu Setup → Remote Viewer Menu looks like this →



Enable—Turns the Remote Viewer option on.

Configure—Allows you to set the user name and password.

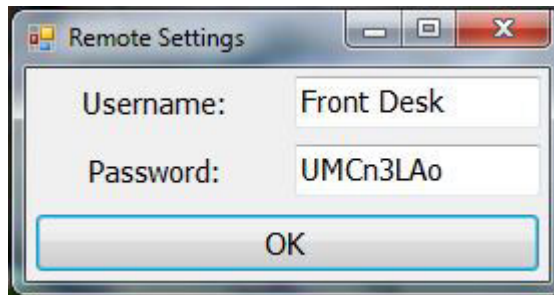
Status—Check to see if the remote viewer is operating properly/

List IP Addresses—Provides you with the computers Host name and an alternative IP Address to use to enable the viewer to communicate with the host OS program.

Configuring your Remote Viewer:

In the OSI™ main menu go to Setup → Remote Viewer → Configure

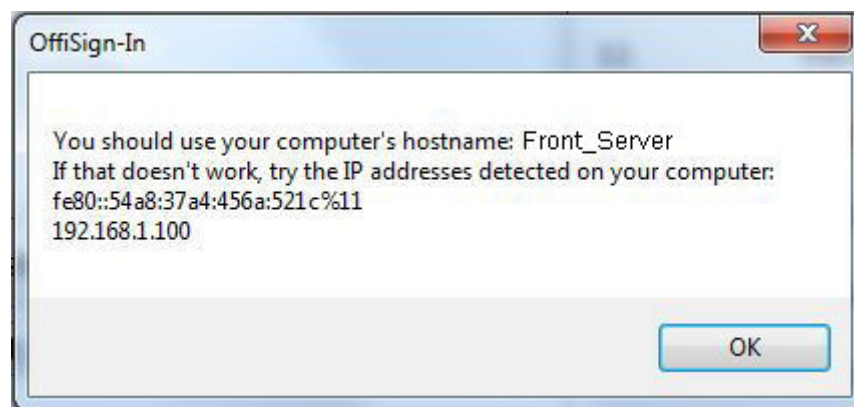
You will see the following menu:



Write down the password, you will need this to configure the Remote Viewers on other computers.

Next go to OSI™: Setup → Remote Viewer → List IP Address

You will see this menu:

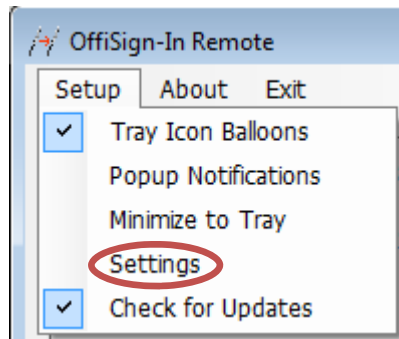


Write down the Hostname, this will be the **Host** name asked for while configuring your Remote Viewers.

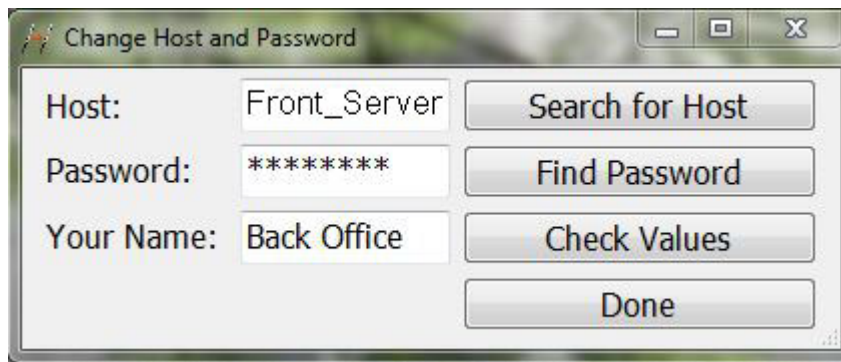
Go to www.offisign-in.com and on the left hand side find the Remote Viewer Download.

Download and install this on any computer connected to the network. Do not install this program on the computer that will be hosting the main OffiSign-In™ Software.

After it is installed run the program and click on **Setup → Settings**



This will bring you to this menu:



Type in the Hostname and password that you copied down.

Click **Done** and you should now be fully operational. When someone signs in their name will appear on every remote viewer!

